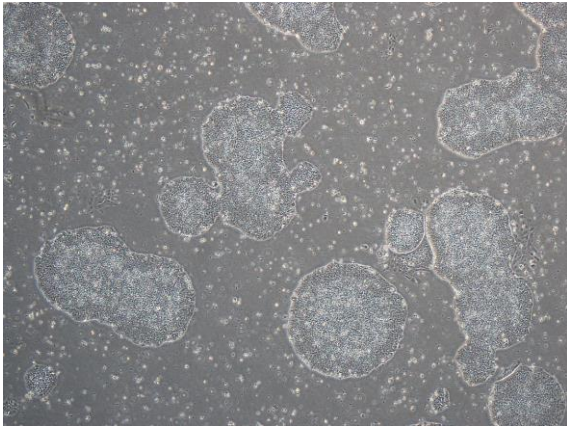
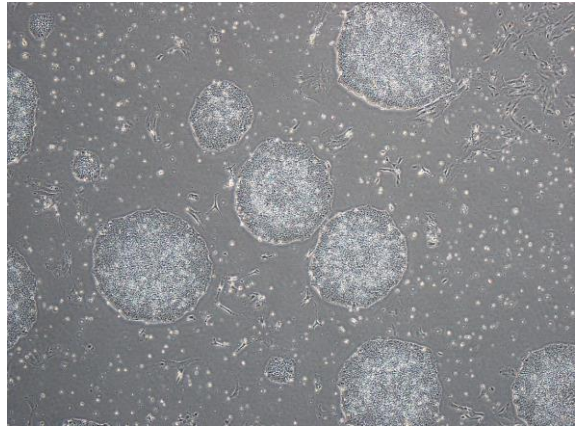


【 CiRA-j-1093 】 Morphology of iPSC colonies

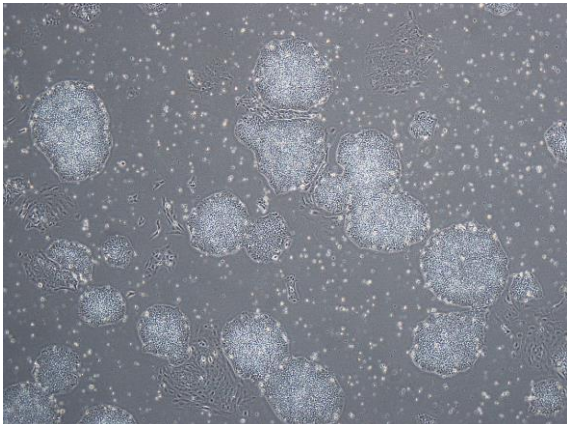
CiRA-j-1093-A: passage-3



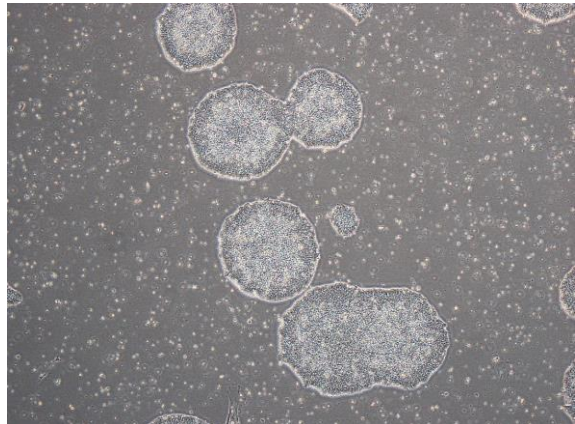
CiRA-j-1093-B: passage-2



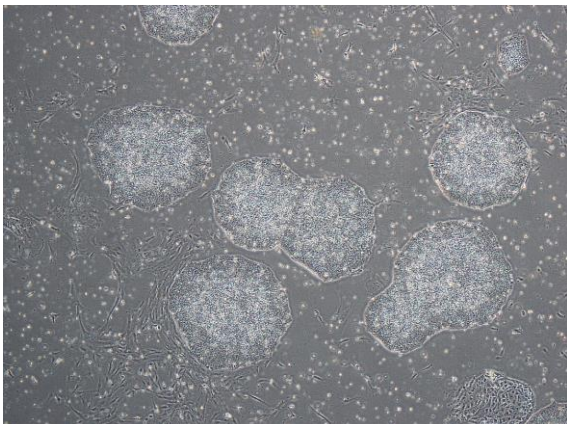
CiRA-j-1093-C: passage-3



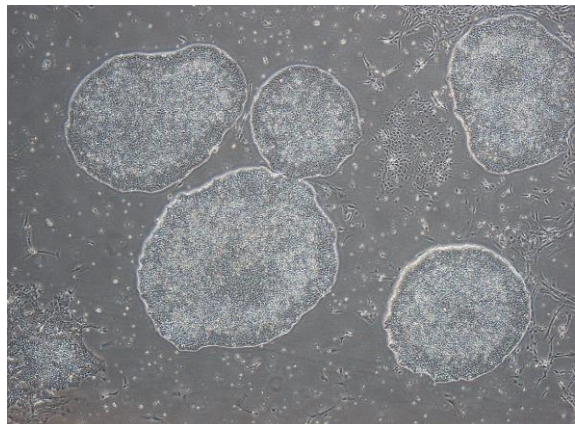
CiRA-j-1093-D: passage-2



CiRA-j-1093-E: passage-2



CiRA-j-1093-F: passage-2



(All images were captured at 4x magnification)